

## **Maintenance methods**

Firstly, dip the sponge or towel into the warm water and then use it to wipe the doll's surface gently. If there is dirt or smears sticking to the surface, please wipe it many times with soap water and don't daub it forcibly. Don't use corrosive cleanser such as strong acid and alkali solution, powerful disinfection solution and detergent etc. Soap, liquid laundry detergent, liquid shampoo, shower gel or mild detergent can be used for cleansing. After the surface is dry, put bath powder or talcum powder on the doll.

## **Maintenance of the joint parts**

If the doll's joints are kept bent for a long time, creases and wrinkles will appear on its surface which is due to the improper posture it is placed in and prolonged pressure on the surface. For example, if it is placed sitting in the chair for a long time, there will be horizontal grains on its abdomen. TPE has resilience itself, so when the doll model is not used, keep it in the posture just like when it came out of the factory, reduce the force on all joints and lay it aside for a certain period of time, the creases and wrinkles will decrease and disappear.

## **STORAGE**

To protect the dolls and make sure they can be used for a long time, there are certain requirements for the storage space. Good doll storage environment can prevent the aging of their skin and internal parts and extend their service life greatly.

### **1. Prevent long-time exposure to the sun.**

Direct sun bathing should be avoided because the color will fade slightly after the long-term sun exposure.

### **2. Prevent dust sticking.**

The lots of dust should be avoided because there are stickiness and static electricity on the surface which make it easy for the dust to stick to the surface. When the doll is placed, please make all efforts to prevent the dust from falling on it to avoid the inconvenience for cleansing.

### **3. Avoid dampness.**

It is fine to wipe the doll with water, but soaking the doll in water should be forbidden. It is absolutely not allowed to pour water into the part of the neck where there are connectors.

## **4. Prevent surface staining.**

Please don't put the doll on the artificial leather or dyed leather chairs for long, for the color of the oil-soluble pigment contained in this kind of objects may seep into the skin. After the doll is put on this kind of objects for more than 1 hour, serious color changing will appear and the color that will seep inside it is very difficult to be eradicated.

## **5. Pay attention to the temperature storage.**

Too high or too low room temperature both should be avoided. Cannot be put in too low or too high environment for a long time and please keep the storage environment temperature between 5°C-35 °C. In winter days, electric blanket can be used to warm the doll, but be sure that its **temperature will not be too high**.

## **6. Prevent the doll from being squeezed.**

Please avoid compressing it when the doll is stored away. Please don't put heavy objects on the doll. Please avoid squeezing or tightening parts of the doll for a long time.

## **7. Keep the doll in the posture free from external force.**

When placed, the doll should be kept in an unfolding posture and being bent or squeezed for a long time will result in the cracks and folds of the skin.

## **8. This is not a children's toy.**

Please don't place the doll in the places the children can get in touch with. This product is not a children's toy. Please prevent minors from coming into contact with it.

## **DRESSING**

The limbs of the doll can move, but there is certain movement scope limit. When dressing the model, to protect its silicone skin, the following points should be paid attention to:

### **1. Use bath powder for preventing stickiness.**

### **2.Prevent the limbs from bending too much.**

When dressing the doll, please don't twist its arms too high which may cause skin ruptures.

### **3. Uninstall the head before putting on a coat.**

When putting on a coat or parts of the clothes, if the clothes are too tight or it is inconvenient to dress the doll, it is necessary that one should remove the doll's head before dressing it.

#### **4. Apply powder on the doll before putting on the pants.**

The skin has a lot of friction. If it is too tight to dress the doll with trousers or socks, please smear bath powder or talcum powder on the legs and try again.

#### **5. Be careful of scratches.**

Please don't make the doll wear clothing or accessories with sharp edges which may cut the skin. If the clothing has ornaments such as sharp buttons or chains, etc., be careful to dress the doll with it.

#### **6. Ear piercing or navel piercing.**

When making the doll wear earrings and other accessories, one can use thin iron wire or needle to prick holes in the skin, but the diameter of the holes cannot be beyond 0.5mm and knives and other sharp objects cannot be used to cut. After earrings are put on, they cannot be pulled and torn to prevent ruptures.

#### **7. Fitness of the clothing.**

Please don't dress the doll with too tight clothing and long-term squeezing will cause deformation or ruptures. If the clothing cannot fit in, please don't try forcibly and some of the clothing must be special clothing for dolls. Avoid dark clothes which could disain dolls. Unless you are sure the color would not go off.

#### **8. Prevent decoloration.**

Some clothes are made of dyed artificial leather or other oil-stained leather materials whose color may seep into the inside of the skin after long-term contact and the color of the doll's skin will change. Please don't dress the doll with this kind of clothes for a long time to prevent its coloring.

### **THE PHYSICAL ACTIVITY SCOPE OF THE DOLL**

The doll models are made of simulation human body . Due to the characteristics of the product itself, excessive activity or a too large movement angle may result in the rupture of the doll, thus please take care in use. Hereinafter are activity limitations for every body part of our doll:

#### **Head**

The doll's head is connected to its body with metal connectors and can turn to the right and the left freely. However, because its neck is fixed by the metal skeleton, the head-lifting and head-bowing forward and backward should not exceed 45 degrees and the head-swaying to the right and left should not go beyond 45 degrees.

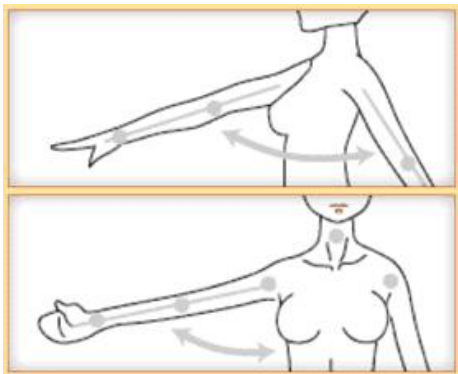


## Shoulders and upper arms

The upper arms can be raised forward as high as to the chest, that is, about 60 degrees forward. They can be bent slightly backward for 5-10 degrees.

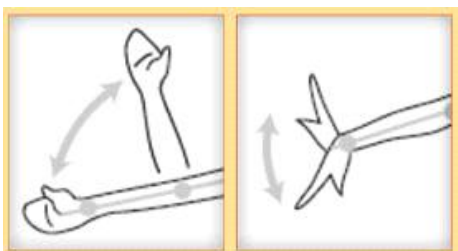
They can be raised to both sides horizontally as high as to the chest level, that is, about 60 degrees in the directions of both sides.

When the upper arms are being folded inside (chest-hugging), they should not exceed the chest, that is, about 15 degrees inside.



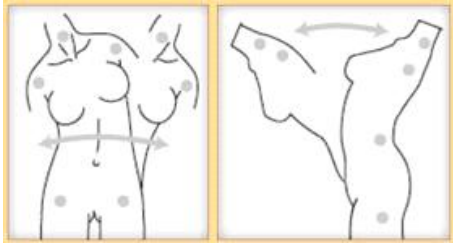
## The lower arms and wrists

The doll's lower arms can rotate in one direction for 90 degrees. Because we set displacement restrictions on the bones, the lower arms can not bend or rotate in the other directions. (Limited to standard bones). The doll's wrists can bend up and down and the angles are 45 degrees up and down separately. The lower arms can rotate and the angles are 60 degrees limit.



## The waist

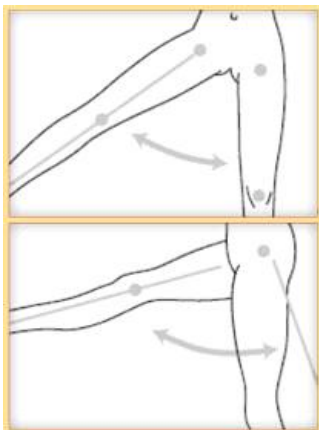
The doll's waist can bend to the left and right horizontally and the angles for this are limited to 30 degrees. The angles for waist bending forward and backward (waist bending and chest throwing out) are limited to 40 degrees. When the body rotates right and left (waist twisting), the angles will be limited to 40 degrees. When the waist is bent and rotated simultaneously, angles in all directions are superimposed and the limits are reduced by half. For example, bend the waist to the left while twist it at the same time, the angle limits in all directions will be reduced to the maximum of 20 degrees.



## Hips and thighs

The thighs of the dolls can be separated to both sides to the maximum of 130 degrees and for single leg splitting the leg can be lifted to 100 degrees.

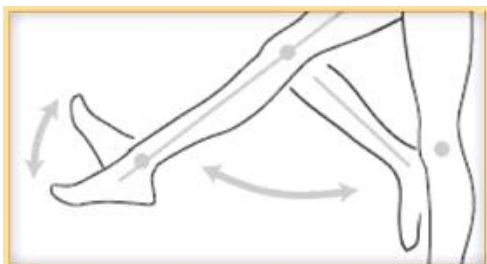
However, we don't recommend opening the doll's thighs too widely and the action can produce much pulling force on the doll which is easy to cause damage. The safe leg opening angle that we recommend is 50 degrees at most to both sides and not over 15 degrees of the body's vertical line to the inside. For single leg, it should not be lifted upward over 90 degrees and bent backward over 15 degrees of the body's vertical line.



## Knees and ankles

The lower legs can be bent backward to the maximum of 120 degrees and the recommended angle is 100 degrees. They have mechanical displacement restrictors and cannot be bent forward.

Its ankles can be rotated up and down and the angle is 45 degrees totally. Similarly they have mechanical displacement restrictors and cannot be rotated too much.



## **Introducing the scars of the doll's positioning holes**

Due to skin casting, there will be slight impurities and speckles on the doll's surface, but they will not affect the beauty and use of the doll. In the meantime, for the fixing of the internal skeleton, there are slight block traces on the doll's shoulder, dips, back and feet soles which are the normal and unavoidable phenomenon and has been marked when the dolls are leaving the factory.

## **Other**

Although our dolls can make movements in larger scope, the aforesaid angles are the officially recommended activity restrictions and if the limited angles are exceeded, skin's local damage and tear may be caused.